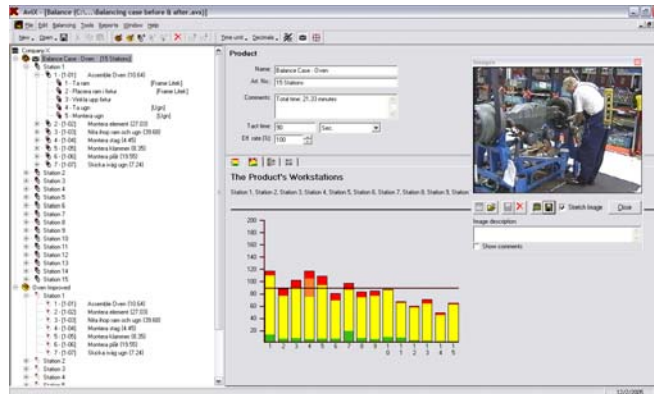


AviX Balance



Balance and increase efficiency in your production line

AviX Balance is production line balancing software. It helps you to optimize your production line. When used with the data from AviX Method, you can also create and simulate new production lines for your products.

See the results directly on your screen.

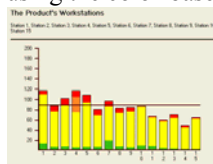
When you balance your production line using AviX Balance you can directly see the results on your screen. By moving operations between workstations you can see how this influences the productivity and efficiency of the line.

Balance several products at the same time.

With AviX Balance it's possible to balance several products at the same time. The system clearly shows how each product affects each workstation and what you need to do in order to optimize the line.

Increase the productivity of your production line.

With AviX Balance you can clearly see how productive your line is. This is made simple by using the color-based system.



Balance your production line with accurate data

AviX Balance uses the data from AviX Method. In so doing it is possible to integrate the continuous improvement work with the time studies. This means that you will always have up-to-date data in your balancing analysis. By using your balancing analysis as Master Model of your production line you will also have the line fully documented. The documentation contains work instructions for every operation, predetermined times for operations, components and tools, and an inventory list for every workstation.

Increase the efficiency of your production line.

AviX Balance clearly shows efficiency loss in a production line. By constantly rebalancing the line after improvements, you make sure that you get the maximum output from your line. It is also possible to simulate how different levels of resources used will affect the efficiency of the line.



www.prologia.net

Full control while balancing

When you balance workload with AviX Balance you will have full control over operations, components and tooling data. When you move work operations between workstations to even out the workload you will move all the data contained in the operation. Once you have finished your analysis you will know where to move components and tooling as well as the new work content for the workstations.

People involvement

AviX Balance uses video technology and the color system in AviX Method to speed up the analysis and to communicate results. The video technology and the color system identify productive versus nonproductive work, and enable you to involve everyone in the continuous improvement effort. The built in pedagogic in the systems allows you to base your continuous improvement program on the philosophy of people involvement, thereby achieve the full potential of your organization.



Modernize your Industrial Engineering and create more value.

By using the latest software for process analysis you can also modernize the methodologies and philosophies used within your Industrial Engineering department, thereby creating more value for your customers.

Communicate

AviX Balance is also a communication tool. Never before has it been easier to explain the complex nature of manufacturing processes to colleagues by using the video technology and color system. This advantage is a must for organizations that strive to be the best in their industry.

Areas of usage

Continuous improvement
Increase efficiency and reduce losses
Simulate a new production line
Plan the production for a new product
Enhance Documentation

Users

Production
Industrial Engineering
Production Planning
Design
Product Development
Purchasing



www.prologia.net